

# Piezoelectronic buzzers

Without oscillator circuit

Pin terminal/Lead lines/SMD

## Overview of the PS series

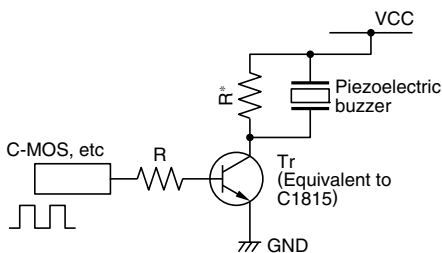
### FEATURES

- Sounding body(unimorph) that piezo bonded the diaphragm is used, and attach on circuit, and is easy design high performance efficiency piezoelectric buzzer.
- They feature extremely low power consumption in comparison to electromagnetic units.
- Because these buzzers are designed for external excitation, the same part can serve as both a musical tone oscillator and a buzzer.
- They can be used with automated inserters. Moisture-resistant models are also available.
- The lead wire type(PS1550L40N) with both-sided adhesive tape installed easily is prepared.

### APPLICATION

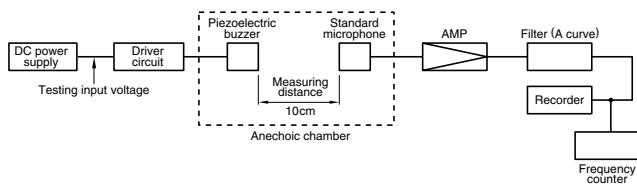
Electric ranges, washing machines, computer terminals, various devices that require speech synthesis output.

### RECOMMENDED OPERATING CIRCUIT EXAMPLE




\* Resistor to do charging and discharging to a piezoelectric element  
(Value of about  $1k\Omega$  is good efficiency).

### SOUND MEASURING METHOD



○ RoHS Directive Compliant Product: See the following for more details. <https://product.tdk.com/info/en/environment/rohs/index.html>

 Please be sure to request delivery specifications that provide further details on the features and specifications of the products for proper and safe use.  
Please note that the contents may change without any prior notice due to reasons such as upgrading.

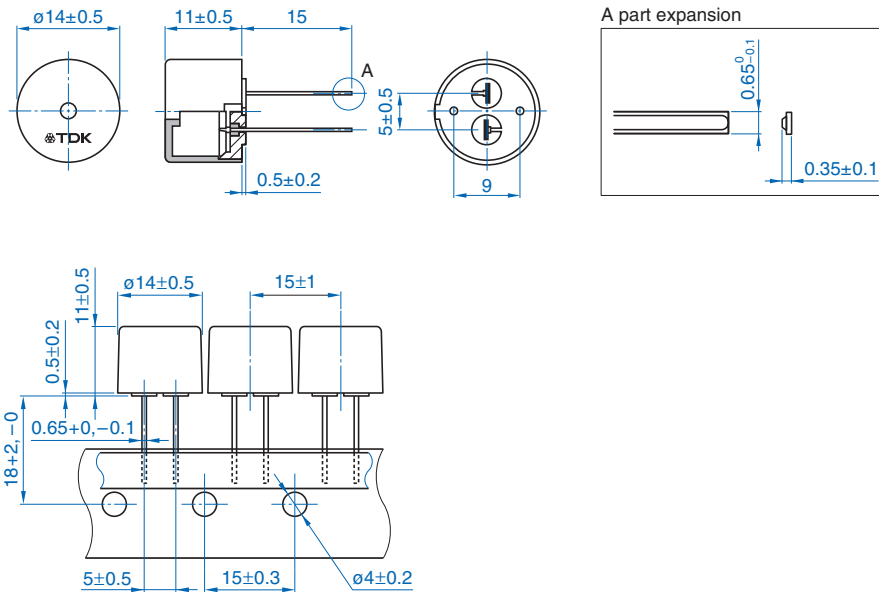
# Pin terminal type PS14

## PS1420P02CT

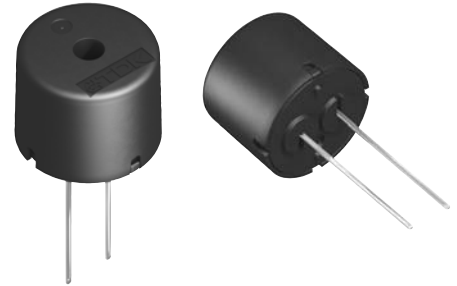
### FEATURES

- Low frequency tone(2kHz).
- Suitable for automatic radial taping machine(15mm-pitch).

### SHAPE & DIMENSIONS



Dimensions in mm

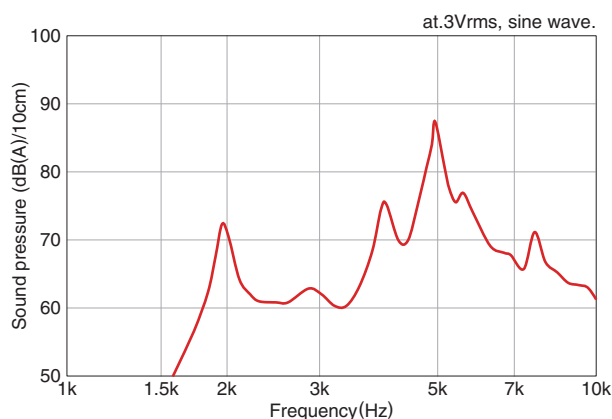


### SPECIFICATIONS

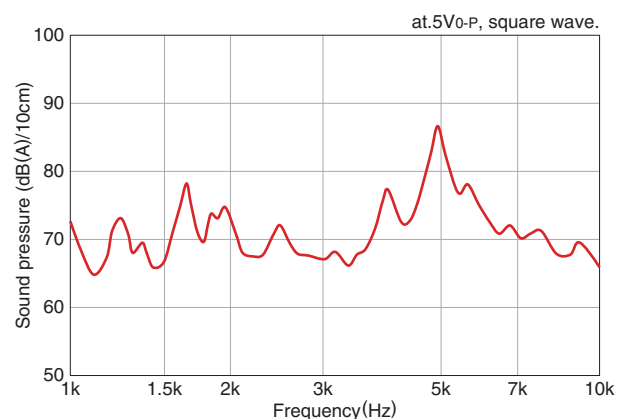
<b>Sound pressure</b>	70dB(A)/10cm min.	[at 2kHz, 5V <sub>0-P</sub> rectangular waves, measuring temperature:25±5°C, humidity:60±10%]
<b>Operating temperature range</b>	-10 to +70°C	
<b>Storage conditions</b>	+5 to +40°C, 20 to 70%RH, please use within 6 months	
<b>Maximum input voltage</b>	30V <sub>0-P</sub> max.	[without DC bias]
<b>Minimum delivery unit</b>	1750 pieces	[350 pieces/1 reel×5 reels]

### FREQUENCY SOUND PRESSURE CHARACTERISTICS

#### SINE WAVE DRIVE



#### SQUARE WAVE DRIVE



⚠ Please be sure to request delivery specifications that provide further details on the features and specifications of the products for proper and safe use.  
Please note that the contents may change without any prior notice due to reasons such as upgrading.